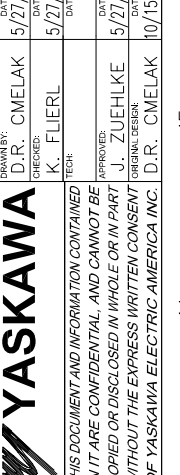
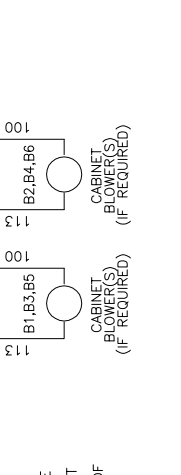
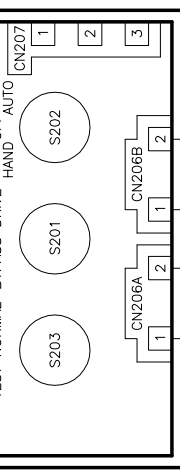
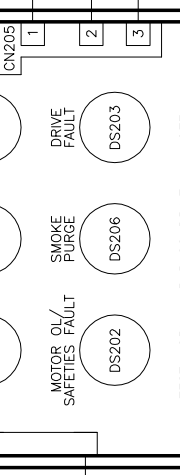
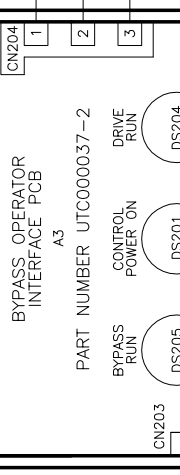
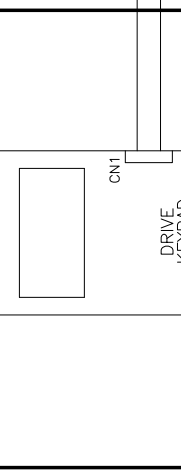


CONTROL TRANSFORMER PRIMARY CONNECTIONS

| INPUT VOLTS | TERMINALS | JUMPER LOCATION |
|-------------|-----------|-----------------|
| 208         | (H1) (H2) | NONE            |
| 230/240     | (H1) (H4) | (H1) TO (H3)    |
| 460/480     | (H1) (H4) | (H2) TO (H4)    |



101 FROM CUSTOMER'S A.C. LINES  
102  
103  
104  
105  
106  
107  
108  
109  
110  
111  
112  
113  
114  
115  
116  
117  
118  
119  
120  
121  
122  
123  
124  
125  
126  
127  
128  
129  
130  
131  
132  
133  
134  
135  
136  
137  
138  
139  
140  
141

A B C D E F G H J K

**YASKAWA**

THIS DOCUMENT AND INFORMATION CONTAINED HEREIN IS CONFIDENTIAL AND CANNOT BE REPRODUCED OR DISCLOSED IN WHOLE OR IN PART WITHOUT THE EXPRESS WRITTEN CONSENT OF YASKAWA ELECTRIC AMERICA INC.

DRAWN BY: D.R. CMELAK  
CHECKED BY: K. FLIERL  
APPROVED BY: J. ZUEHLKE  
DESIGNED BY: D.R. CMELAK

DATE: 5/27/08  
DATE: 5/27/08  
DATE: 5/27/08  
DATE: 10/15/04

TITLE: SCHEMATIC DIAGRAM  
E7B BYPASS

SIZE: D  
REVISION: R04  
PAGE: 1 of 3

DRAWING NO.: DS.E7B.01

\* - INDICATES COMPONENTS NOT SUPPLIED BY YASKAWA.  
- - - INDICATES CUSTOMER WIRING.  
SEE SHEETS 2 AND 3 FOR NOTES AND TABLES.

**NOTES:**

- CONNECTED TO THE CABINET. CUSTOMER TO CONNECT THE CABINET GROUND LUG TO EARTH GROUND.
- THE MOTOR OVERLOAD RELAY IS FACTORY SET FOR MANUAL RESET. CUSTOMER TO ADJUST THE MOTOR OVERLOAD RELAY TRIP SETTING FOR THE ACTUAL AC MOTOR'S FULL LOAD AMPS.
- TERMINALS TB1(1) AND TB1(2) ARE SUPPLIED FOR INSERTION OF CUSTOMER SUPPLIED NORMALLY CLOSED SAFETY CONTACTS (I.E., FIRESTAT, FREEZESTAT, WINDING OR BEARING TEMPERATURE ACTIVATED SWITCHES). IF APPLICABLE, REMOVE FACTORY INSTALLED JUMPER J1.
- TERMINALS TB1(5) AND TB1(6) ARE SUPPLIED FOR INSERTION OF A CUSTOMER SUPPLIED NORMALLY OPEN DAMPER END SWITCH (OPEN = DAMPER CLOSED, AND CLOSED = DAMPER FULLY OPEN), OR A NORMALLY OPEN BUILDING AUTOMATION SYSTEM (BAS) INTERLOCK. IF APPLICABLE, REMOVE THE FACTORY INSTALLED JUMPER J2.
- INSULATED TWISTED SHIELDED WIRE IS REQUIRED. 2 CONDUCTOR #18GA. (BELDEN #8760, OR EQUIVALENT). SHIELD TO CONNECT TO PROPER TERMINAL AS SHOWN. CONNECT THE SHIELD ONLY AT THIS END. STUB AND ISOLATE THE OTHER END. DO NOT RUN THESE WIRES IN THE SAME CONDUIT AS THE AC POWER AND AC CONTROL WIRES.
- FOR E7B BYPASSES WITH A CONTROL TRANSFORMER, T1, POWER RATING OF 350VA OR GREATER, SECONDARY FUSE F6 IS ADDED.
- SERIAL COMMUNICATIONS OPTIONS 2, 3, J, U, V, OR L (SEE TABLE 5 ON SHEET 3):  
 OPTION 2 = ETHERNET/IP, OPTION 3 = BACNET, OPTION J = EMBEDDED METASYS N2, OPTION U = EMBEDDED APOGEE FLN, OPTION V = EMBEDDED MODBUS AND OPTION L = LONWORKS  
 A. THE HAND/OFF/AUTO SWITCH MUST BE IN THE "AUTO" POSITION, IF SERIAL COMMUNICATION IS TO BE USED TO CONTROL THE DRIVE.  
 B. TO OBTAIN AN ANALOG REFERENCE AT DRIVE TERMINAL A2 WHEN IN THE "AUTO" MODE, THERE MUST BE JUMPERS ADDED TO THE DRIVE, FROM TERMINAL S4 TO TERMINAL SN, AND FROM TERMINAL S5 TO TERMINAL S6.  
 C. THERE MUST BE A JUMPER ADDED TO THE DRIVE, FROM TERMINAL S5 TO TERMINAL S6.

**TABLE 1 FACTORY SET DRIVE PARAMETERS**

| PARAMETER | DATA        | UNIT  | DESCRIPTION/REMARKS                                                              |
|-----------|-------------|-------|----------------------------------------------------------------------------------|
| b1-01     | SEE TABLE 5 | N/A   | FREQUENCY REFERENCE SELECTION                                                    |
| b1-08     | 1           | N/A   | RUN COMMAND SELECTION DURING PROGRAMMING - ENABLED                               |
| b2-03     | 0.0         | SEC.  | DC INJECTION BRAKING TIME AT START                                               |
| b5-01     | SEE TABLE 5 | N/A   | PI MODE SETTING                                                                  |
| d1-01     | 10.0        | HZ.   | FREQUENCY REFERENCE 1 - SEE TABLE 5                                              |
| d1-02     | 6.0         | HZ.   | FREQUENCY REFERENCE 2 - SEE TABLE 5                                              |
| d1-04     | 20.0        | HZ.   | FREQUENCY REFERENCE 4 - SEE TABLE 5                                              |
| E1-01     | 240(480)    | VOLTS | STANDARD INPUT VOLTAGE SETTING                                                   |
|           | 208         |       | INPUT VOLTAGE SETTING FOR BASE NUMBER "D_---"                                    |
| E1-05     | 230(460)    | VOLTS | STANDARD MAXIMUM OUTPUT VOLTAGE SETTING                                          |
|           | 208         |       | MAXIMUM OUTPUT VOLTAGE SETTING FOR BASE NUMBER "D_---"                           |
| F6-02     | SEE TABLE 5 | N/A   | SERIAL COMMUNICATIONS EXTERNAL FAULT DETECTION SELECTION                         |
| F6-03     | SEE TABLE 5 | N/A   | SERIAL COMMUNICATIONS EXTERNAL FAULT STOPPING METHOD SELECTION                   |
| H1-01     | 70          | N/A   | TERMINAL S3 SET FOR BYPASS DRIVE ENABLE                                          |
| H1-02     | SEE TABLE 5 | N/A   | TERMINAL S4 SELECTION                                                            |
| H1-03     | SEE TABLE 5 | N/A   | TERMINAL S5 SELECTION                                                            |
| H1-04     | SEE TABLE 5 | N/A   | TERMINAL S6 SELECTION                                                            |
| H2-02     | 3B          | N/A   | TERMINALS M3-M4 SET FOR SERIAL COMM. RUN COMMAND                                 |
| H3-08     | SEE TABLE 5 | N/A   | TERMINAL A2 SIGNAL SELECTION                                                     |
| H3-09     | SEE TABLE 5 | N/A   | TERMINAL A2 FUNCTION SELECTION                                                   |
| H3-13     | SEE TABLE 5 | N/A   | TERMINALS A1 AND A2 MASTER FREQUENCY REFERENCE SELECTION                         |
| H5-02     | SEE TABLE 5 | N/A   | SERIAL COMMUNICATIONS SPEED SELECTION BAUD RATE                                  |
| H5-07     | SEE TABLE 5 | N/A   | REQUEST TO SEND (RTS) CONTROL SELECTION                                          |
| H5-08     | SEE TABLE 5 | N/A   | SERIAL COMMUNICATIONS PROTOCOL SELECTION                                         |
| H5-09     | 10.0        | SEC.  | SERIAL COMMUNICATIONS ERROR DETECTION TIME                                       |
| L4-05     | 0           | N/A   | FREQUENCY REFERENCE LOSS DETECTION DISABLED                                      |
| L5-01     | 10          | N/A   | NUMBER OF AUTO RESTART ATTEMPTS                                                  |
| L5-03     | 10.0        | SEC.  | MAXIMUM RESTART TIME AFTER FAULT                                                 |
| o2-02     | 0           | N/A   | DIGITAL OPERATOR KEYPAD "OFF" KEY DISABLED                                       |
| o2-03     | 1           | N/A   | USER INITIALIZATION FACTORY SET PARAMETER DEFAULT VALUES (FOUND IN A1-03="1110") |
| o2-15     | 0           | N/A   | DIGITAL OPERATOR KEYPAD "HAND" KEY DISABLED                                      |
| o3-02     | 1           | N/A   | DIGITAL OPERATOR KEYPAD READ ALLOWED ENABLED                                     |

SEE SHEET 3 FOR TABLE 5.

**CUSTOMER WIRING REQUIREMENTS**

- FOR 0 TO 100 AMPS, USE A MINIMUM OF 60° -75°C COPPER WIRE.
- FOR ABOVE 100 AMPS, USE A MINIMUM OF 75°C COPPER WIRE.

**TABLE 2 E7 BYPASS MODEL NO. BASE NUMBER E7B \*XXXX**

| MODEL NO. BASE NUMBER E7B *XXXX | MFG. PART NUMBER | CURRENT RATING (AMPS) | WIRE SIZE RANGE (AWG)   | TIGHTENING TORQUE (LB.-IN.) |
|---------------------------------|------------------|-----------------------|-------------------------|-----------------------------|
| 208V 240V 480V                  | FAL36003         | 3                     | 14 - 4                  | 35                          |
| A002 B001                       | FAL36007         | 7                     |                         |                             |
| D002 A003 B002                  | FAL36007         |                       |                         |                             |
| D003 A004 B003                  |                  |                       |                         |                             |
| D004                            |                  |                       |                         |                             |
| D007 A006 B007                  | FAL36015         | 15                    |                         |                             |
| D010 A009 B011                  |                  |                       |                         |                             |
| D016 A015 B014                  | FAL36030         | 30                    |                         |                             |
| A022 B021                       |                  |                       |                         |                             |
| D024 A028 B027                  | FAL36050         | 50                    | 14 - 1/0                | 80                          |
| D030                            |                  |                       |                         |                             |
| D046 A042 B040                  | FAL36100         | 100                   |                         |                             |
| D059 A054 B052                  |                  |                       |                         |                             |
| A068 B065                       |                  |                       |                         |                             |
| B077                            |                  |                       |                         |                             |
| D074 A080 B096                  | KAL36150         | 150                   | 4 - 350 kcmil           | 250                         |
| D088 A104                       |                  |                       |                         |                             |
| D114 A130 B124                  | KAL36250         | 250                   |                         |                             |
| D143 A154 B156                  |                  |                       |                         |                             |
| D169 A192 B180                  |                  |                       |                         |                             |
| D211 A248 B240                  | LAL36400         | 400                   | 1 x (1-600 kcmil)       | 375                         |
| D273                            |                  |                       | 2 x (1-250 kcmil)       | 2 x 375                     |
| D343 A312 B361                  | MAL36600         | 600                   | (1-3) x (370-500 kcmil) | (1-3) x 300                 |
| D396 A360 B414                  |                  |                       |                         |                             |
| B477                            | MAL36800         | 800                   |                         |                             |
| B515                            |                  |                       |                         |                             |
| B590                            |                  |                       |                         |                             |

WHERE \* = V (NEMA 1) OR B (NEMA 12)

**TABLE 3 E7 BYPASS PART NUMBER E7B \*XXXX**

| PART NUMBER E7B *XXXX | WIRE SIZE RANGE (AWG) | TIGHTENING TORQUE (LB.-IN.) |
|-----------------------|-----------------------|-----------------------------|
| 208V 240V 480V        | 14 - 10               | 35                          |
| D002 A002 B001        |                       |                             |
| D003 A003 B002        |                       |                             |
| D004 A004 B003        |                       |                             |
| D007 A006 B004        |                       |                             |
| D010 A009 B007        |                       |                             |
| D016 A015 B011        |                       |                             |
| D024 A022 B014        |                       |                             |
| D030 A028 B021        |                       |                             |
| B027                  |                       |                             |
| B034                  |                       |                             |
| D046 A042 B040        | 8                     | 40                          |
| D059 A054 B052        |                       |                             |
| A068 B065             |                       |                             |
| B077                  |                       |                             |
| D074 A080 B096        | 6 - 4                 | 45                          |
| D088 A104 B124        |                       |                             |
| D114                  |                       |                             |
| D143 A130 B156        | 14 - 2/0              | 120                         |
| D169 A154 B180        |                       |                             |
| D211 A192 B240        |                       |                             |
| D273 A248 B302        |                       |                             |
| D343 A312 B361        |                       |                             |
| D396 A360 B414        |                       |                             |
| B477                  |                       |                             |
| B515                  |                       |                             |
| B590                  |                       |                             |

**TABLE 4 E7 BYPASS MODEL NO. BASE NUMBER E7B \*XXXX**

| MODEL NO. BASE NUMBER E7B *XXXX | MFG. PART NUMBER | WIRE SIZE RANGE (AWG) | TIGHTENING TORQUE (LB.-IN.) | STANDARD BYPASS OVERLOAD RELAY |                       |                             | A.C. MOTOR WIRING |                       |                             | OR, WITH OPTION A OVERLOAD RELAYS |                       |                             | OR, WITH OPTION D A.C. CONTACTORS |                       |                             |
|---------------------------------|------------------|-----------------------|-----------------------------|--------------------------------|-----------------------|-----------------------------|-------------------|-----------------------|-----------------------------|-----------------------------------|-----------------------|-----------------------------|-----------------------------------|-----------------------|-----------------------------|
|                                 |                  |                       |                             | MFG. PART NUMBER               | WIRE SIZE RANGE (AWG) | TIGHTENING TORQUE (LB.-IN.) | MFG. PART NUMBER  | WIRE SIZE RANGE (AWG) | TIGHTENING TORQUE (LB.-IN.) | MFG. PART NUMBER                  | WIRE SIZE RANGE (AWG) | TIGHTENING TORQUE (LB.-IN.) | MFG. PART NUMBER                  | WIRE SIZE RANGE (AWG) | TIGHTENING TORQUE (LB.-IN.) |
| 208V 240V 480V                  | B001             | 18 - 8                | 15                          | LRD06                          | 18 - 8                | 15                          | LRD05             | 18 - 8                | 15                          | LC1 D09                           | 18 - 10               | 15                          |                                   |                       |                             |
| D002 A002 B001                  | LRD07            | 18 - 8                | 15                          | LRD06                          |                       |                             | LRD06             |                       |                             |                                   |                       |                             |                                   |                       |                             |
| D003 A003 B003                  | LRD15            | 18 - 8                | 15                          | LRD15                          |                       |                             | LRD15             |                       |                             |                                   |                       |                             |                                   |                       |                             |
| D004 A004 B004                  | LRD15            | 18 - 8                | 15                          | LRD15                          |                       |                             | LRD15             |                       |                             |                                   |                       |                             |                                   |                       |                             |
| D007 A006 B007                  | LRD15            | 18 - 8                | 15                          | LRD15                          |                       |                             | LRD15             |                       |                             |                                   |                       |                             |                                   |                       |                             |
| D010 A009 B011                  | LRD15            | 18 - 8                | 15                          | LRD15                          |                       |                             | LRD15             |                       |                             |                                   |                       |                             |                                   |                       |                             |
| D016 A015 B014                  | LRD15            | 18 - 8                | 15                          | LRD15                          |                       |                             | LRD15             |                       |                             |                                   |                       |                             |                                   |                       |                             |
| D024 A022 B021                  | LRD15            | 18 - 8                | 15                          | LRD15                          |                       |                             | LRD15             |                       |                             |                                   |                       |                             |                                   |                       |                             |
| D030 A028 B027                  | LRD15            | 18 - 8                | 15                          | LRD15                          |                       |                             | LRD15             |                       |                             |                                   |                       |                             |                                   |                       |                             |
| B034                            | LRD15            | 18 - 8                | 15                          | LRD15                          |                       |                             | LRD15             |                       |                             |                                   |                       |                             |                                   |                       |                             |
| B040                            | LRD15            | 18 - 8                | 15                          | LRD15                          |                       |                             | LRD15             |                       |                             |                                   |                       |                             |                                   |                       |                             |
| D046 A042 B052                  | LRD15            | 18 - 8                | 15                          | LRD15                          |                       |                             | LRD15             |                       |                             |                                   |                       |                             |                                   |                       |                             |
| D059 A054 B065                  | LRD15            | 18 - 8                | 15                          | LRD15                          |                       |                             | LRD15             |                       |                             |                                   |                       |                             |                                   |                       |                             |
| B065                            | LRD15            | 18 - 8                | 15                          | LRD15                          |                       |                             | LRD15             |                       |                             |                                   |                       |                             |                                   |                       |                             |
| D074 A068 B077                  | LRD15            | 18 - 8                | 15                          | LRD15                          |                       |                             | LRD15             |                       |                             |                                   |                       |                             |                                   |                       |                             |
| A080                            | LRD15            | 18 - 8                | 15                          | LRD15                          |                       |                             | LRD15             |                       |                             |                                   |                       |                             |                                   |                       |                             |
| D088 B096                       | LRD15            | 18 - 8                | 15                          | LRD15                          |                       |                             | LRD15             |                       |                             |                                   |                       |                             |                                   |                       |                             |
| A104                            | LRD15            | 18 - 8                | 15                          | LRD15                          |                       |                             | LRD15             |                       |                             |                                   |                       |                             |                                   |                       |                             |
| D114 A130 B124                  | LRD15            | 18 - 8                | 15                          | LRD15                          |                       |                             | LRD15             |                       |                             |                                   |                       |                             |                                   |                       |                             |
| D143                            | LRD15            | 18 - 8                | 15                          | LRD15                          |                       |                             | LRD15             |                       |                             |                                   |                       |                             |                                   |                       |                             |
| D169 A192 B180                  | LRD15            | 18 - 8                | 15                          | LRD15                          |                       |                             | LRD15             |                       |                             |                                   |                       |                             |                                   |                       |                             |
| D211 A248 B240                  | LRD15            | 18 - 8                | 15                          | LRD15                          |                       |                             | LRD15             |                       |                             |                                   |                       |                             |                                   |                       |                             |
| D273                            | LRD15            | 18 - 8                | 15                          | LRD15                          |                       |                             | LRD15             |                       |                             |                                   |                       |                             |                                   |                       |                             |
| D343 A312 B361                  | LRD15            | 18 - 8                | 15                          | LRD15                          |                       |                             | LRD15             |                       |                             |                                   |                       |                             |                                   |                       |                             |
| D396                            | LRD15            | 18 - 8                | 15                          | LRD15                          |                       |                             | LRD15             |                       |                             |                                   |                       |                             |                                   |                       |                             |
| B034                            | LRD15            | 18 - 8                | 15                          | LRD15                          |                       |                             | LRD15             |                       |                             |                                   |                       |                             |                                   |                       |                             |
| B040                            | LRD15            | 18 - 8                | 15                          | LRD15                          |                       |                             | LRD15             |                       |                             |                                   |                       |                             |                                   |                       |                             |
| D046 A042 B052                  | LRD15            | 18 - 8                | 15                          | LRD15                          |                       |                             | LRD15             |                       |                             |                                   |                       |                             |                                   |                       |                             |
| D059 A054 B065                  | LRD15            | 18 - 8                | 15                          | LRD15                          |                       |                             | LRD15             |                       |                             |                                   |                       |                             |                                   |                       |                             |
| B065                            | LRD15            | 18 - 8                | 15                          | LRD15                          |                       |                             | LRD15             |                       |                             |                                   |                       |                             |                                   |                       |                             |
| D074 A068 B077                  | LRD15            | 18 - 8                | 15                          | LRD15                          |                       |                             | LRD15             |                       |                             |                                   |                       |                             |                                   |                       |                             |
| A080                            | LRD15            | 18 - 8                | 15                          | LRD15                          |                       |                             | LRD15             |                       |                             |                                   |                       |                             |                                   |                       |                             |
| D088 B096                       | LRD15            | 18 - 8                | 15                          | LRD15                          |                       |                             | LRD15             |                       |                             |                                   |                       |                             |                                   |                       |                             |
| A104                            | LRD15            | 18 - 8                | 15                          | LRD15                          |                       |                             | LRD15             |                       |                             |                                   |                       |                             |                                   |                       |                             |
| D114 A130 B124                  | LRD15            | 18 - 8                | 15                          | LRD15                          |                       |                             | LRD15             |                       |                             |                                   |                       |                             |                                   |                       |                             |
| D143                            | LRD15            | 18 - 8                | 15                          | LRD15                          |                       |                             | LRD15             |                       |                             |                                   |                       |                             |                                   |                       |                             |
| D169 A192 B180                  | LRD15            | 18 - 8                | 15                          | LRD15                          |                       |                             | LRD15             |                       |                             |                                   |                       |                             |                                   |                       |                             |
| D211 A248 B240                  | LRD15            | 18 - 8                | 15                          | LRD15                          |                       |                             | LRD15             |                       |                             |                                   |                       |                             |                                   |                       |                             |
| D273                            | LRD15            | 18 - 8                | 15                          | LRD15                          |                       |                             | LRD15             |                       |                             |                                   |                       |                             |                                   |                       |                             |
| D343 A312 B361                  | LRD15            | 18 - 8                | 15                          | LRD15                          |                       |                             | LRD15             |                       |                             |                                   |                       |                             |                                   |                       |                             |
| D396                            | LRD15            | 18 - 8                | 15                          | LRD15                          |                       |                             | LRD15             |                       |                             |                                   |                       |                             |                                   |                       |                             |
| B034                            | LRD15            | 18 - 8                | 15                          | LRD15                          |                       |                             | LRD15             |                       |                             |                                   |                       |                             |                                   |                       |                             |
| B040                            | LRD15            | 18 - 8                | 15                          | LRD15                          |                       |                             | LRD15             |                       |                             |                                   |                       |                             |                                   |                       |                             |
| D046 A042 B052                  | LRD15            | 18 - 8                | 15                          | LRD15                          |                       |                             | LRD15             |                       |                             |                                   |                       |                             |                                   |                       |                             |
| D059 A054 B065                  | LRD15            | 18 - 8                | 15                          | LRD15                          |                       |                             | LRD15             |                       |                             |                                   |                       |                             |                                   |                       |                             |
| B065                            | LRD15            | 18 - 8                | 15                          | LRD15                          |                       |                             | LRD15             |                       |                             |                                   |                       |                             |                                   |                       |                             |
| D074 A068 B077                  | LRD15            | 18 - 8                | 15                          | LRD15                          |                       |                             | LRD15             |                       |                             |                                   |                       |                             |                                   |                       |                             |
| A080                            | LRD15            | 18 - 8                | 15                          | LRD15                          |                       |                             | LRD15             |                       |                             |                                   |                       |                             |                                   |                       |                             |
| D088 B096                       | LRD15            | 18 - 8                | 15                          | LRD15                          |                       |                             | LRD15             |                       |                             |                                   |                       |                             |                                   |                       |                             |
| A104                            | LRD15            | 18 - 8                | 15                          | LRD15                          |                       |                             | LRD15             |                       |                             |                                   |                       |                             |                                   |                       |                             |
| D114 A130 B124                  | LRD15            | 18 - 8                | 15                          | LRD15                          |                       |                             | LRD15             |                       |                             |                                   |                       |                             |                                   |                       |                             |
| D143                            | LRD15            | 18 - 8                | 15                          | LRD15                          |                       |                             | LRD15             |                       |                             |                                   |                       |                             |                                   |                       |                             |
| D169 A192 B180                  | LRD15            | 18 - 8                | 15                          | LRD15                          |                       |                             | LRD15             |                       |                             |                                   |                       |                             |                                   |                       |                             |
| D211 A248 B240                  | LRD15            | 18 - 8                | 15                          | LRD15                          |                       |                             | LRD15             |                       |                             |                                   |                       |                             |                                   |                       |                             |
| D273                            | LRD15            | 18 - 8                | 15                          | LRD15                          |                       |                             | LRD15             |                       |                             |                                   |                       |                             |                                   |                       |                             |
| D343 A312 B361                  | LRD15            | 18 - 8                | 15                          | LRD15                          |                       |                             | LRD15             |                       |                             |                                   |                       |                             |                                   |                       |                             |
| D396                            | LRD15            | 18 - 8                | 15                          | LRD15                          |                       |                             | LRD15             |                       |                             |                                   |                       |                             |                                   |                       |                             |
| B034                            | LRD15            | 18 - 8                | 15                          | LRD15                          |                       |                             | LRD15             |                       |                             |                                   |                       |                             |                                   |                       |                             |
| B040                            | LRD15            | 18 - 8                | 15                          | LRD15                          |                       |                             | LRD15             |                       |                             |                                   |                       |                             |                                   |                       |                             |
| D046 A042 B052                  | LRD15            | 18 - 8                | 15                          | LRD15                          |                       |                             | LRD15             |                       |                             |                                   |                       |                             |                                   |                       |                             |
| D059 A054 B065                  | LRD15            | 18 - 8                | 15                          | LRD15                          |                       |                             | LRD15             |                       |                             |                                   |                       |                             |                                   |                       |                             |
| B065                            | LRD15            | 18 - 8                | 15                          | LRD15                          |                       |                             | LRD15             |                       |                             |                                   |                       |                             |                                   |                       |                             |
| D074 A068 B077                  | LRD15            | 18 - 8                | 15                          | LRD15                          |                       |                             | LRD15             |                       |                             |                                   |                       |                             |                                   |                       |                             |
| A080                            | LRD15            | 18 - 8                | 15                          | LRD15                          |                       |                             | LRD15             |                       |                             |                                   |                       |                             |                                   |                       |                             |
| D08                             |                  |                       |                             |                                |                       |                             |                   |                       |                             |                                   |                       |                             |                                   |                       |                             |

